

GOLD EXPRESS MINES

CREATING VALUE BY ACQUIRING &
DEVELOPING MULTI-COMMODITY
MINING ASSETS IN THE WESTERN USA

JUNE 2023



Safe Harbor Statement

Projections, Forward-looking Statements, Etc.

Any projections, forward-looking statements and other data contained in the following presentation are based on a number of estimates and assumptions by Gold Express Mines, Inc. (GEM), including among others, estimates of and assumptions relating to future performance of mines based on historic ounces per ton (opt) outputs, timing regarding schedule and amount of production, mining costs, sustained value of gold versus international currencies, and the ability to secure necessary financing. These estimates and assumptions are inherently uncertain and are subject to numerous geological, business, competitive and financial risks which are outside of GEM's control. There can be no assurance that the assumptions made in connection with the projections, forward-looking statements and other data herein will prove accurate, and actual results may differ materially. The inclusion of projections, forward-looking statements and other data herein should not be regarded as an indication that GEM considers them to be a reliable prediction of future events and they should not be relied upon as such. A further discussion of the risks associated with GEM's business and the impact of such risks on the projections, forward-looking statements and other data herein can be found in the documents filed by GEM with the US Securities and Exchange Commission.

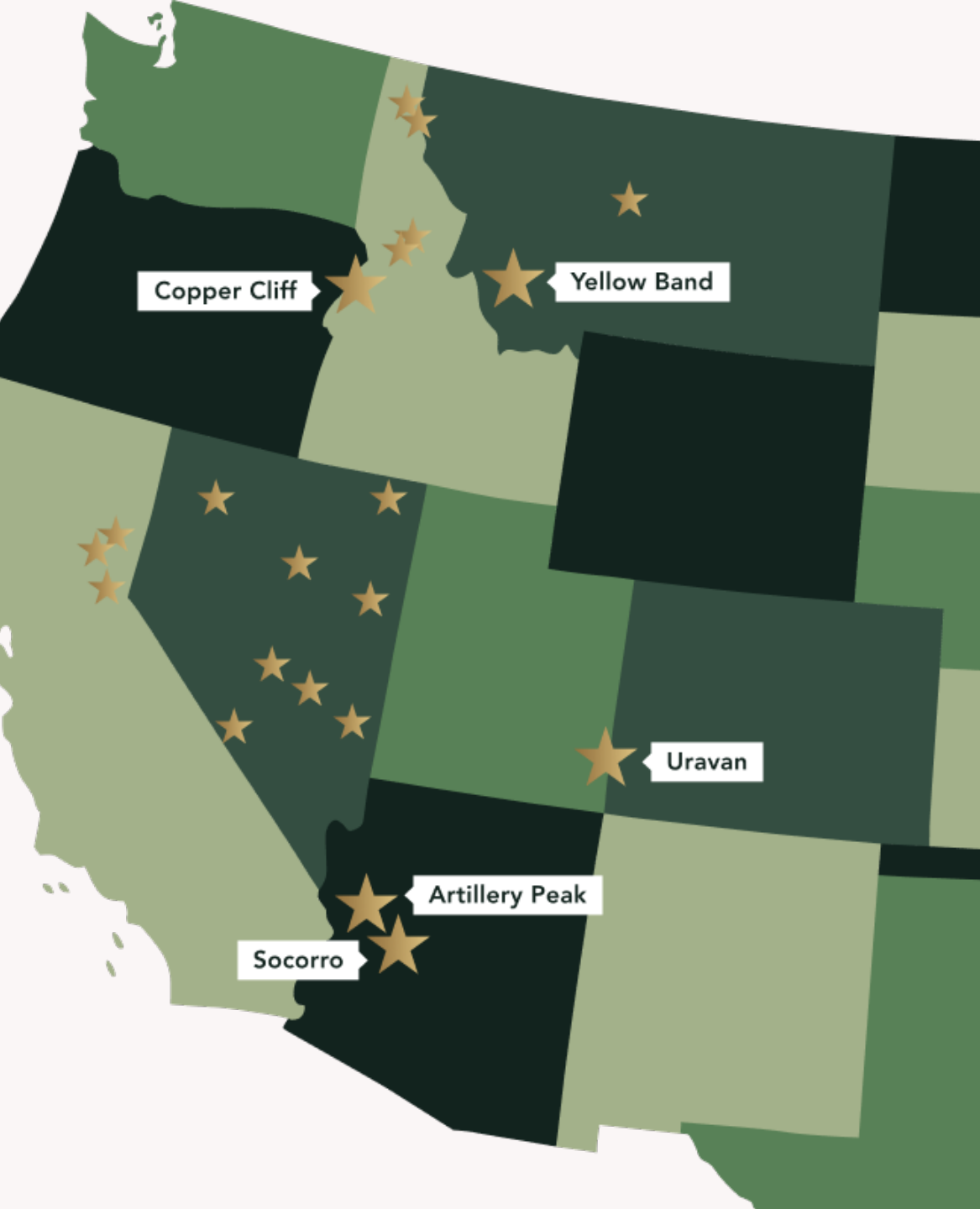
Not an offer to purchase or sell securities.

This presentation does not constitute an offer to sell or a solicitation of an offer to buy any security and may not be relied upon in connection with purchase or sale of any security.

No Representation of Accuracy.

Projections, forward-looking statements and other data discussed herein, are neither historical facts nor assurances of future performance. Instead, they are estimates that reflect the best judgment of GEM management based on currently available information. Because projections, forward-looking statements and other data contained herein relate to the future, they involve a number of risks, uncertainties and other factors that are outside of our control and could cause actual results to differ materially from those stated. Therefore, you should not rely on any projections, forward-looking statements or other data contained herein. Neither GEM, its employees, nor its representatives has made or makes any representation or warranty, expressed or implied, to any persons regarding projections, forward-looking statements or other data contained herein. All projections, forward-looking statements and other data contained herein are based on information available to GEM on the date here of, and GEM assumes no obligation to update such projections, forward-looking statements or other data contained herein, whether as a result of new information, future developments or otherwise, except as required by law.





Property Locations

GEM has over 20 multi-commodity properties in its western US project pipeline. All of GEM's projects have historical mineralization data associated with them and are in historically well-known and productive mining districts.

Focus Projects

PROJECT	TYPE
Artillery Peak (AZ)	Detachment Fault Au/Ag Veins
Uravan (CO/UT)	U and V
Copper Cliff (ID)	Intrusive-related Cu Veins
Yellow Band (MT)	Epithermal Au/Ag Veins



The Highlights

ARIZONA

Artillery Peak	Wide fairway and strike of sheeted gold vein system.
Collom	Recent samples up to 26 opt silver and 1% copper.
Mineral Creek	Historic drilling assays up to 2% Cu and 0.5 opt Au.
Pioneer	High grade historical lead/silver producer; in copper porphyry area.
Socorro	Historical modeling indicates possible 35.6 MT of rock with 760,000 oz Au.
Zulu	20-foot-wide vein system; 4-8 gm mining grades; recent 6 gm soil sample.

CALIFORNIA

Lost Emigrant	USGS 1980s estimate indicated 250,000 tons totaling 77,000 oz Au.
Sisson	USGS 1980s estimate indicated substantial Au at 0.15 opt.
Snyder	<p>Historic operators delineated 189,000 oz Au in 6.6 MT.</p> <ul style="list-style-type: none"> • High grade core of 75,000 oz 0.15 opt. • Enlarged land position to ~800 acres to capture historic resource

COLORADO/UTAH

Uravan	Near-term based permitted uranium tracts leased with purchase option until January 2025. Land package enlarged, and recent assays very positive.
---------------	--

IDAHO

Copper Cliff	Historic Copper Cliff Mine. Staked claims & mining lease on patented claims.
Golden	Historic past producers include the Buffalo-Idaho, Sphinx, Illinois, Mackey, Iron Crown and Newsome Mines.

**Evidence of past production and results does not imply future success. Timing and amount of actual production is dependent on obtaining permits, financing and other factors. Therefore, actual results may vary from projections. Past profitability may not be indicative of future financial results. Actual results may vary from the historical results.*



GOLD EXPRESS MINES

The Highlights

MONTANA	
Neihart	Historic Lexington, Big Seven and other mines located on patented claims. Neihart area produced over \$15MM in silver and other minerals between 1881-1945.
Yellow Band	Historic gold/silver mines under a long-term lease; possible early gold and silver production.

NEVADA	
Aurum	Copper and silver with silver values up to 90 opt.
Black Prince	Potential for bulk silver in limestones.
Diamond Jim	Historic estimate of 4 MT of 2 opt Ag with additional gold numbers.
Gold Boulder	Surface samples up to 1 opt Au.
Goldstone	Battle Mountain trend gold opportunity.
Ledbetter	Potential for bulk style deposit.
Nyala	Base metals with gold and silver.

**Evidence of past production and results does not imply future success. Timing and amount of actual production is dependent on obtaining permits, financing and other factors. Therefore, actual results may vary from projections. Past profitability may not be indicative of future financial results. Actual results may vary from the historical results.*



Copper Projects Sold to Key Metals Corp.

Three exploration copper projects sold to Key Metals Corp. for 6 million Key Metals' common shares valued at \$1.5MM:

- **Trout Creek Mineral Lease (sale price 1.6MM shares)**
 - 54 unpatented mining claims in Sanders County, MT
 - Copper-silver strata-bound mineralization
- **Soldier Creek Project (sale price 1.8MM shares)**
 - 79 unpatented mining claims in Toole County, UT
 - Porphyry-style copper mineralization
- **Big Sandy Project (sale price 2.6MM shares)**
 - 75 unpatented mining claims located in Mohave County, AZ
 - Porphyry-style copper mineralization
 - On western boundary of Bell Copper's new copper porphyry discovery.

Sale Objectives:

- ✓ Give GEM exposure to an advanced-stage Chilean Key Metals copper project known as Fiel Rosita; and,
- ✓ Provide political and geographical diversity to both companies.

GEM believes Key Metals is an attractive future acquisition target for major copper company.

Key Metals currently planning IPO on Nasdaq or NYSE-MKT around mid-2023.



YELLOW BAND

ARGENTA MINING DISTRICT - BEAVERHEAD COUNTY, MT

- 7-year-term lease with option to purchase.
- Unique opportunity with existing drilled resources.
- Upside exists to expand the resource along a 5-mile strike.
- Located 16 miles northwest of Dillon (population 5,000).
- Historic estimates to be verified by drilling and bulk sampling.
- Repair work at Boaz Tunnel allowed access to historic mine workings, providing better understanding of the mineralized zones.
- Company sampling results are driving a renewed local and regional approach of exploration to enlarge scope of known mineralization.

HISTORY

- Since its 1934 discovery, the mine profitably produced gold in an era when gold was at \$35/oz.
- Initial 20 unpatented mining claims comprising the project were consolidated by a single owner and kept in good standing since 1934.
- Existing Historic Mineral Resource estimates (all categories) range from 1.2 MMST at 0.378 opt Au to 1.9 MMST at 0.283 opt Au with silver credit of ~2.7 opt Ag.



YB WORK PROGRAMS

FOCUS PROJECT – YELLOW BAND

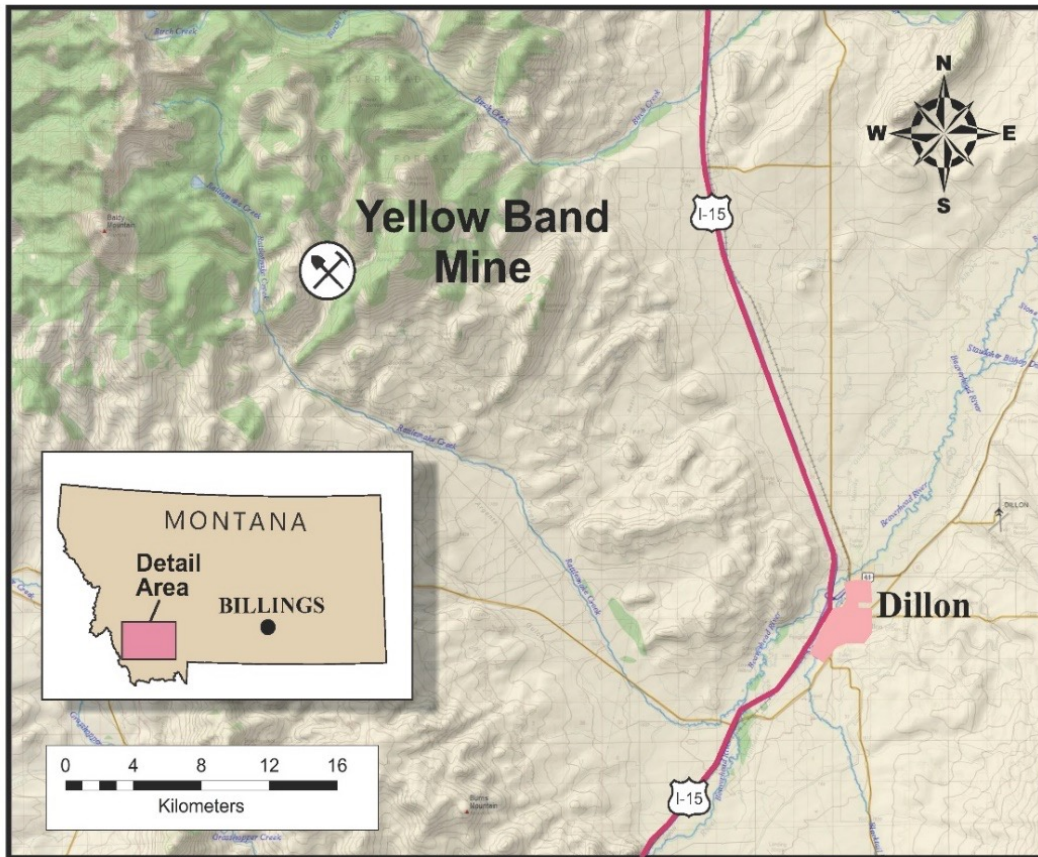
9

2021-22 WORK COMPLETED OR UNDERWAY (BUDGET: \$3,700,500)

- Completed three independent metallurgy studies.
 - Recent flotation results are promising.
- Completed new NI 43-101 report
 - Recommends further drilling to confirm past resource estimates.
- Additional claims staked to expand resource coverage.
- Completed Boaz Tunnel raise repairs May 2022 - allowed access to old mining areas for sampling.
 - Sample results were very positive.
- Regional geology work program completed in October of 2022.

2023 PLANS TOWARDS PRODUCTION (BUDGET: \$4,350,000)

- Pre-production mine development.
- Make decision on milling facility & enter contracts.
- Design and construct for underground selective mining method.
- Closed Direct Participation Financing of \$5MM. Company retains 50% interest.
- Bulk sample extraction at 50-100 TPD.
- When permitted, expected production to build to ~300 TPD.



YB Proposed Drilling

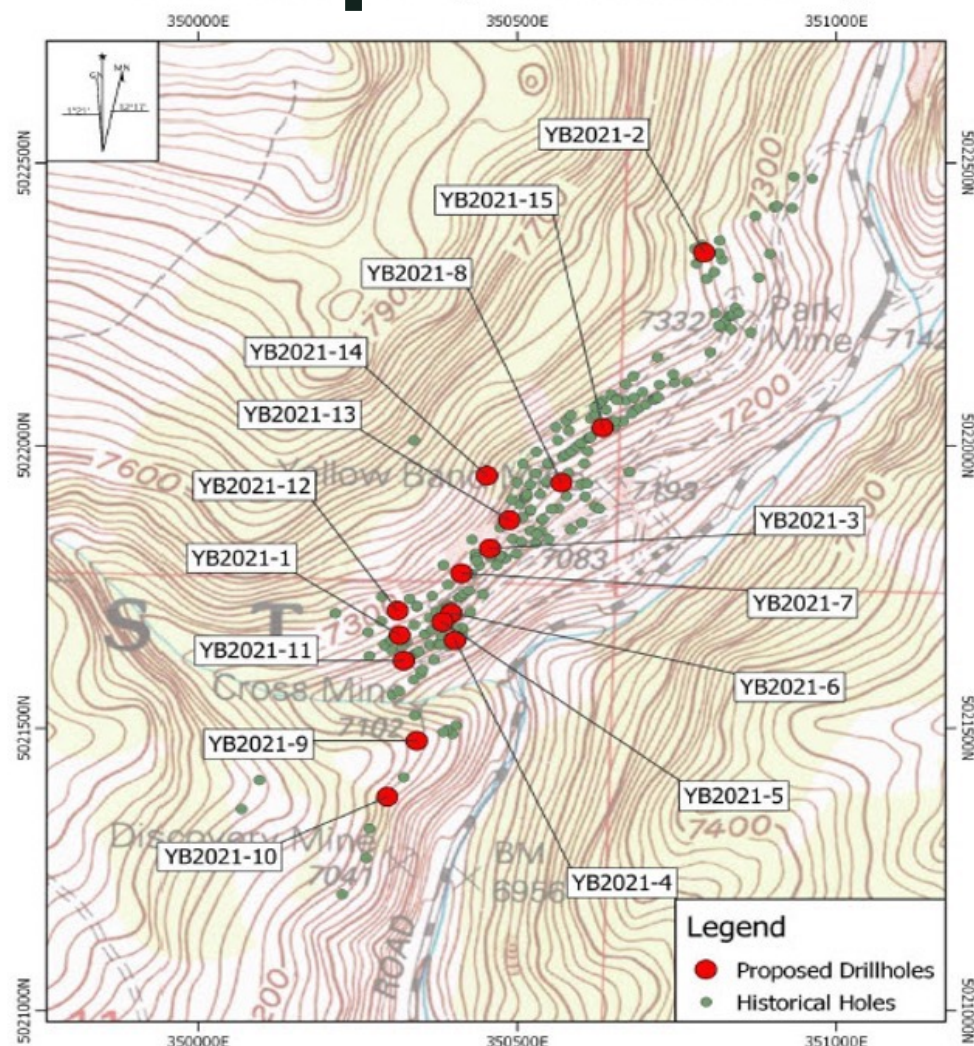


Fig. 1. Map of proposed drill hole locations compared with historical drill hole locations.

*Evidence of past production and results does not imply future success. Timing and amount of actual production is dependent on obtaining permits, financing and other factors. Therefore, actual results may vary from projections. Past profitability may not be indicative of future financial results. Actual results may vary from the historical results.

Table 1. Proposed drill hole details.

Hole ID	UTM X	UTM Y	UTM Z ¹	Azimuth	Dip	TD (m)
YB2021-1	350316	5021665	2205	0	-90	50
YB2021-2	350793	5022342	2252	0	-90	50
YB2021-3	350458	5021818	2220	0	-90	75
YB2021-4	350403	5021655	2182	0	-90	75
YB2021-5	350383	5021688	2196	0	-90	75
YB2021-6	350397	5021704	2200	0	-90	75
YB2021-7	350413	5021774	2219	0	-90	75
YB2021-8	350570	5021934	2210	0	-90	75
YB2021-9	350343	5021478	2192	0	-90	75
YB2021-10	350297	5021378	2184	100	-45	100
YB2021-11	350322	5021619	2192	0	-50	100
YB2021-12	350313	5021708	2220	40	-50	100
YB2021-13	350488	5021868	2222	30	-65	80
YB2021-14	350453	5021947	2253	0	-90	200
YB2021-15	350634	5022032	2229	0	-90	75

Total 1280

¹XYZ coordinates are presented in WG584 Zone 12N (EPSG: 32612). Elevation (Z) in meters.

Table 2. Grade and thickness of intervals from historical holes which will be twinned.

New Hole ID	Twinned Hole ID	Historical Interval Grade Thickness (g*ft)	Historical Interval From (ft)	Historical Interval To (ft)	Historical Interval Length (ft)	Gold Grade (g/t)
YB2021-1	38	1016.58	185	195	10	101.66
YB2021-2	80	584.58	100	105	5	116.92
YB2021-3	111	55.69	172.2	178.8	1.6	34.81
YB2021-4	171	478.55	15	45	30	15.95
*YB2021-11	179	10.63	210	217.5	7.5	1.42
*YB2021-12	137	18.17	105	115	10	1.82
*YB2021-13	104	0	N/A	N/A	N/A	N/A
YB2021-14	21	0	N/A	N/A	N/A	N/A
YB2021-15	WDH2	131.08	60	130	70	1.74

* Same collar location, different azimuth and dip.



Socorro

LA PAZ COUNTY, AZ

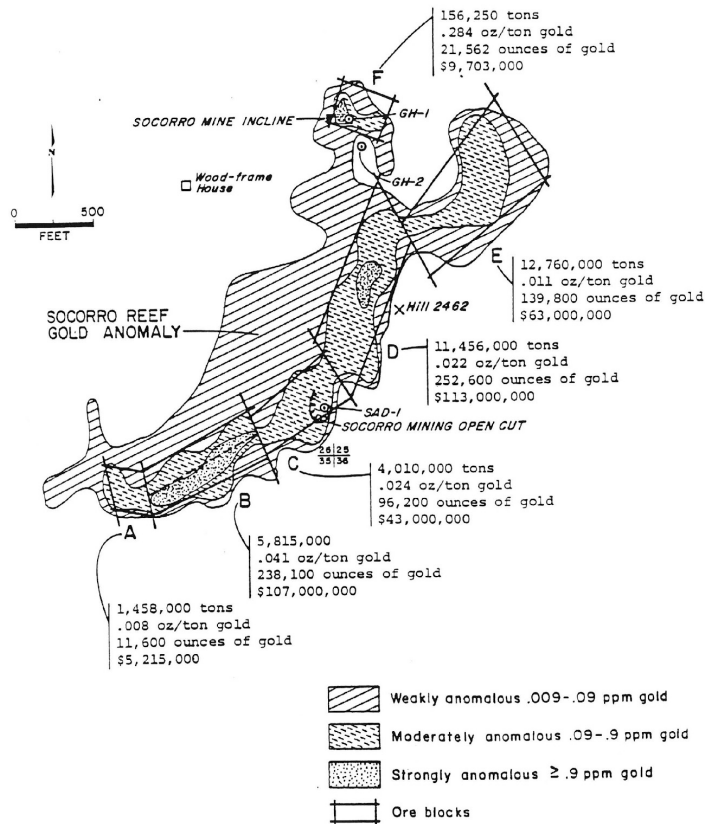


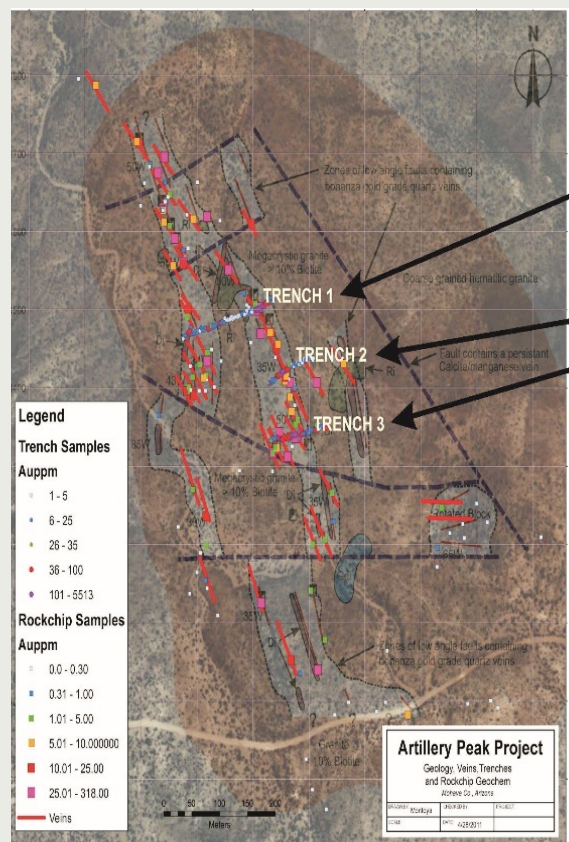
Figure B. Map of Socorro Reef gold anomaly showing drill hole locations and grade-tonnage blocks discussed in text.

- The Socorro Project is a historically mined low-grade gold system located in La Paz County, Arizona.
- Several companies historically explored the property including Noranda, U.S. Borax, Exxon Minerals, and Asarco.
- In 1982 an Arizona geologist named Stan Keith estimated a resource of 760,000 ounces at an avg. grade of 0.66 grams per ton -- please see figure B at left (gold prices in 1982 @ \$450/ounce).
- The Socorro gold project is located approximately 88 airmiles west of Phoenix, Arizona and 8.5 miles east of Salome, Arizona, the nearest town
- A drilling program has been developed which will focus first on the higher-grade zones identified by Stan Keith.
- Drill permit granted Spring 2023 and is fully bonded.
- Property is a mineral lease with purchase option with Precious Metals LLC of Denver, CO.
- Potential is for 750,000 ounces of open-pit mineralization.
- Ten-year mine life on property producing 55,000 ounces annually at estimated LOM AISC of \$1250 per ounce.
- Heap leach pads and recovery plant would be constructed in flats below the mine, possibly on to-be-purchased private ground.



Artillery Peak

MOHAVE COUNTY, AZ



Trench Results

Trench #	Width (m)	Average Gold (g/t)	Highest Gold (g/t)
Trench 1	24.4	0.41	4.251
High Grade Zone within Trench 1	7.6	1.09	4.251
Trench 2	10.7	0.44	1.898
Trench 3	19.8	0.81	5.513
High Grade Zone within Trench 3	16.8	0.98	5.513

Artillery Peak Gold Project
Rock Chip Gold Values

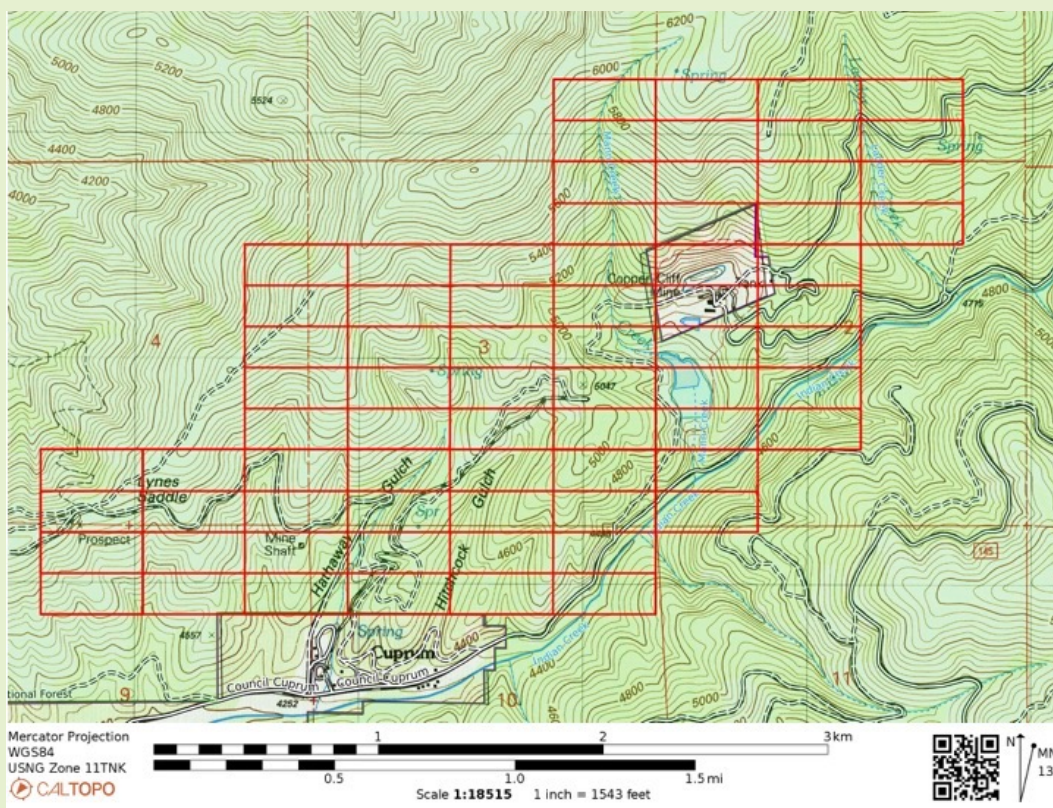
- Past historical drilling and sampling indicated substantial zones of ore grade and anomalous gold.
- Historic trench sampling results of greater than 0.25 opt Au.
- Mineralization is hosted in a 750-meter by 450-meter fairway giving potential for a substantial gold resource.
- Future geophysics include:
 - Further IP studies on existing claim areas.
 - Deep AMT to confirm the deeper potential.
- Fall 2022 Drill Program:
 - 15-hole diamond drilling consisting of 12 shallow holes plus three deeper holes to test down-dip continuity.
- Drill permit granted Spring 2022 and bond payment secured.
- Property is a mineral lease with purchase option of with Precious Metals LLC consisting of 14 unpatented mining claims. Company has staked additional claims.
- Recent chip sampling results yielded gold numbers with multiple 1+ opt assays from vein outcrops and stockwork zones.

2023 PROJECT BUDGET: \$350,000



Copper Cliff

ADAMS COUNTY, ID



- Acquired a lease on patented mining claims comprising the historic Copper Cliff Mine near Cuprum, Idaho.
- Company recently completed staking 77 unpatented mining claims surrounding the leased patents.
- Historic copper mine producing last in the 1970s from an open pit.
- Mineralization is vein-hosted and strata-bound copper and occurs in greenstone rocks of Triassic age called the Seven Devils volcanics.
- Drilling conducted summer of 2022:
 - Three diamond drillholes were drilled from the east side of the open pit targeting the downward extension of the historically mined ore body.
 - These holes failed to pickup any significant mineralization.
- New drill plan is to drill 3 - 4 holes from the west side of the historic open pit.
- Patented property is a mineral lease with a purchase option:
 - Lease payment is \$12,000 annually.
 - Purchase price is \$250,000 - all lease payments apply towards purchase.

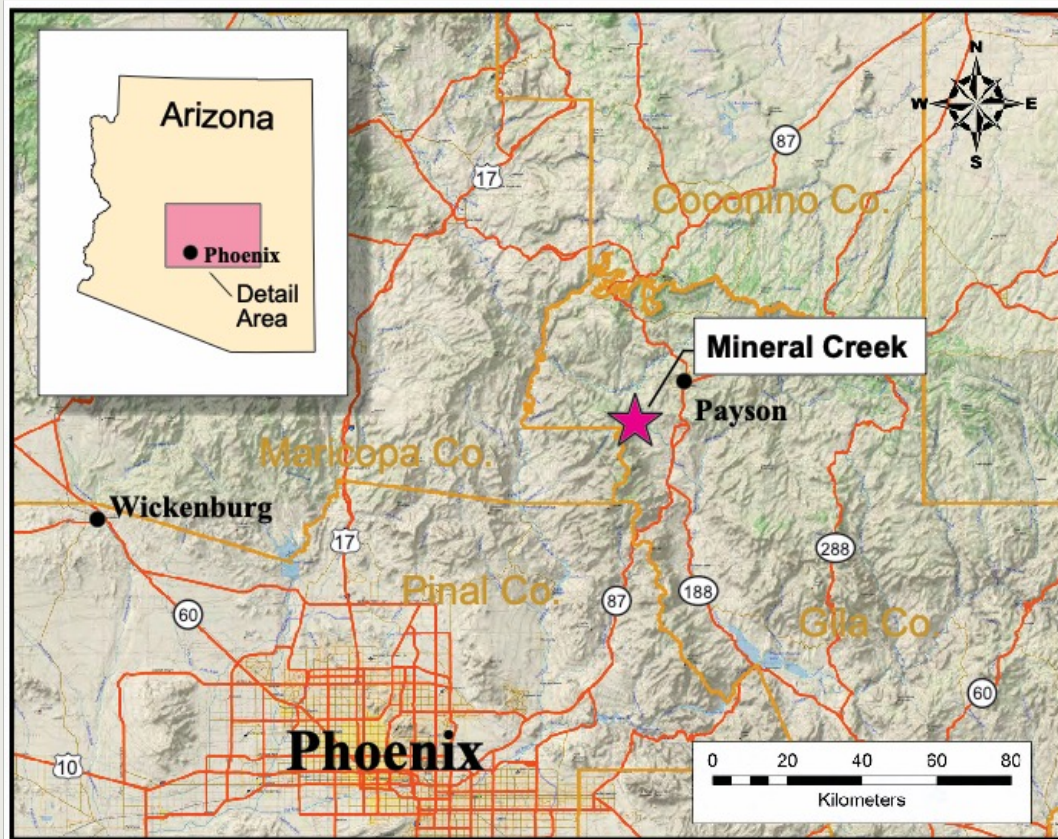
2023 PROJECT BUDGET: \$300,000

**Evidence of past production and results does not imply future success. Timing and amount of actual production is dependent on obtaining permits, financing and other factors. Therefore, actual results may vary from projections. Past profitability may not be indicative of future financial results. Actual results may vary from the historical results.*



Mineral Creek

GILA COUNTY, AZ



- Past historical drilling and sampling indicated substantial zones of copper and gold.
- Historic drill sampling results of 1% Cu or greater and 0.25 opt Au.
- Recent geophysics indicates a very deep oxide copper/gold system at the site.
- Deep copper-oxide zonation sets up a possibility of a very valuable and substantial sized copper oxide deposit.
- Drilling Planned Fall 2023:
 - Reverse circulation drilling is planned.
- Geophysics (if warranted after results of drilling):
 - Further Induced Polarization Studies on existing claim areas.
 - Deep Advanced Magnetotellurics (AMT) to confirm the deep oxides.
 - Expansion of land holdings.

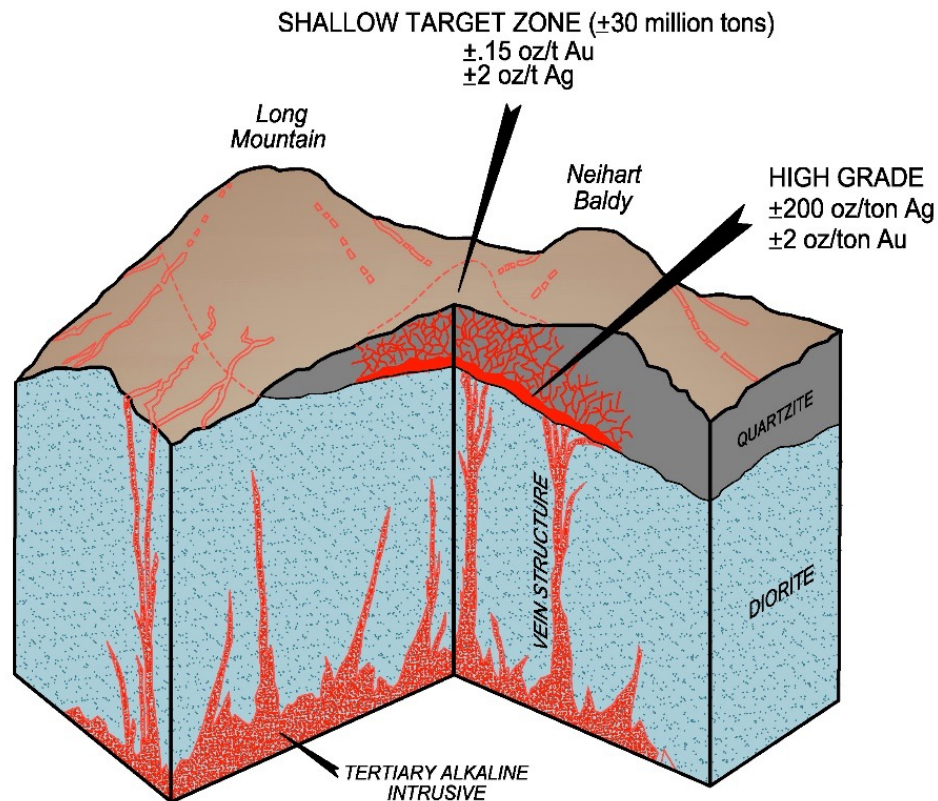
2023 PROJECT BUDGET: \$250,000

**Evidence of past production and results does not imply future success. Timing and amount of actual production is dependent on obtaining permits, financing and other factors. Therefore, actual results may vary from projections. Past profitability may not be indicative of future financial results. Actual results may vary from the historical results.*



Neihart

CASCADE COUNTY, MT



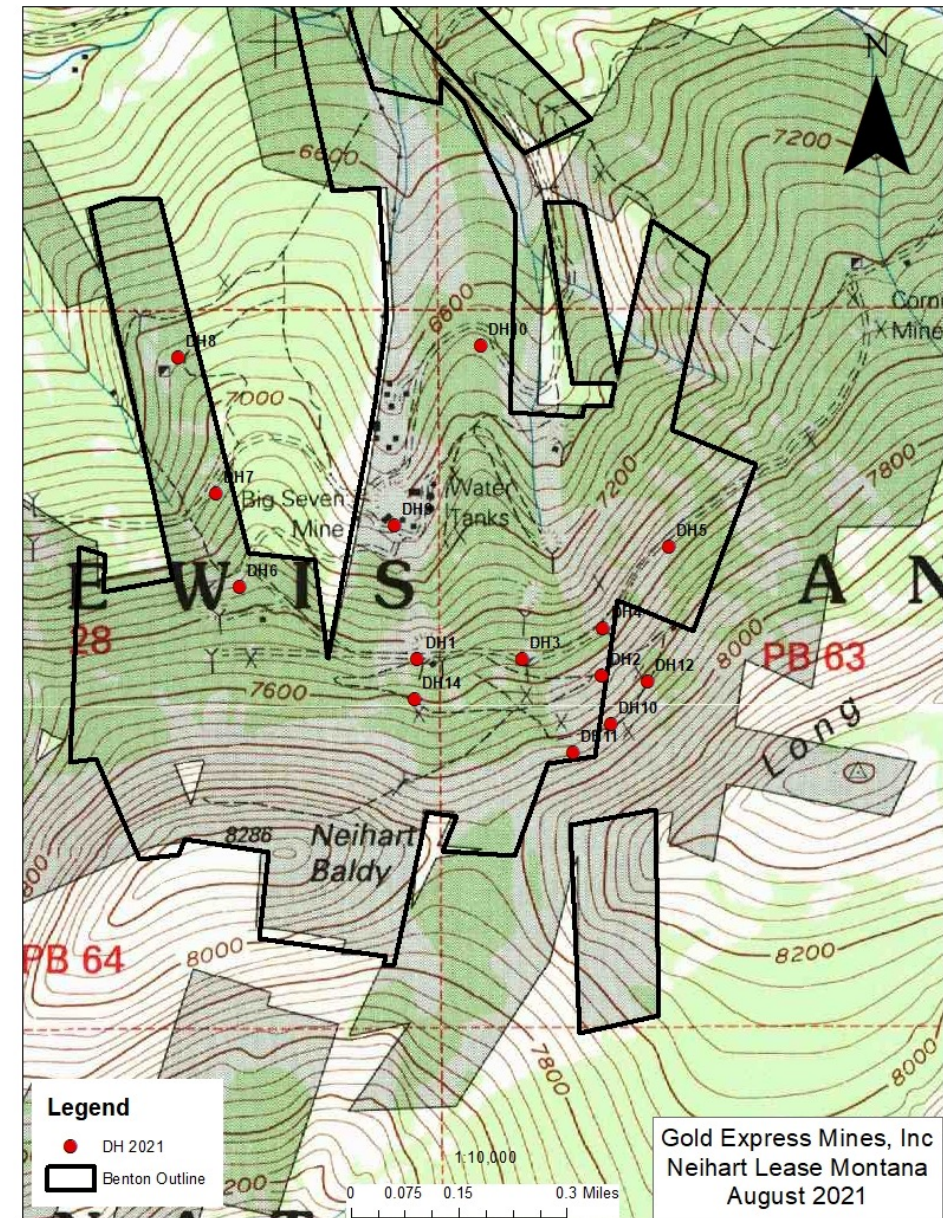
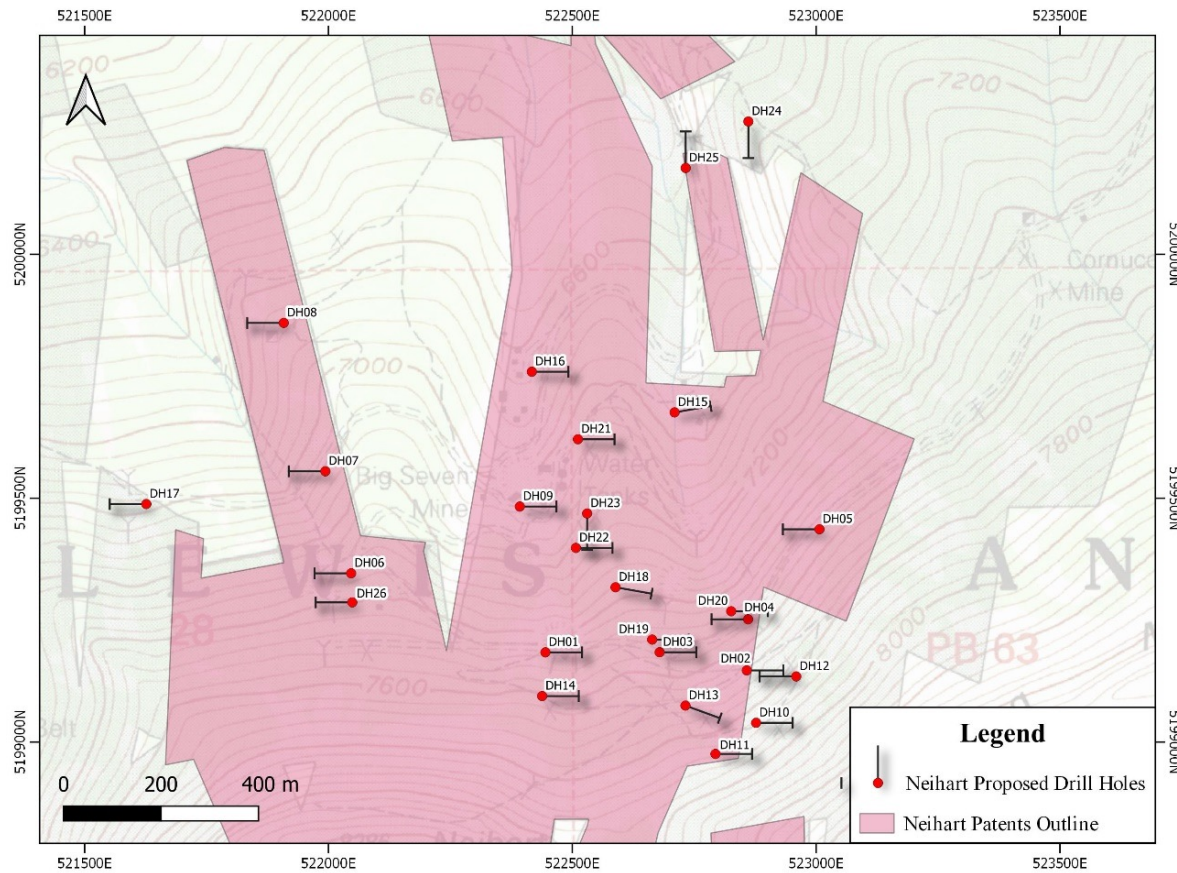
FOCUS PROJECT
NEIHART, MONTANA

- Past production from high-grade silver veins with associated base metals and gold down-dip and along strike on veins historically mined.
- Typical grades were 15 opt to 20 opt Ag and 10% combined base metal content.
- Targets include remnant high-grade veins as well as a bulk-minable disseminated deposit described in a past geologic report.
- Hecla Mining sampling in the 1980s confirmed the potential for bulk tonnages.
- Project is on patented mining claims for easier and faster permitting.
- Intensive surface sampling program, geologic reconnaissance and first phase of IP geophysics completed October 2021.

*Evidence of past production and results does not imply future success. Timing and amount of actual production is dependent on obtaining permits, financing and other factors. Therefore, actual results may vary from projections. Past profitability may not be indicative of future financial results. Actual results may vary from the historical results.

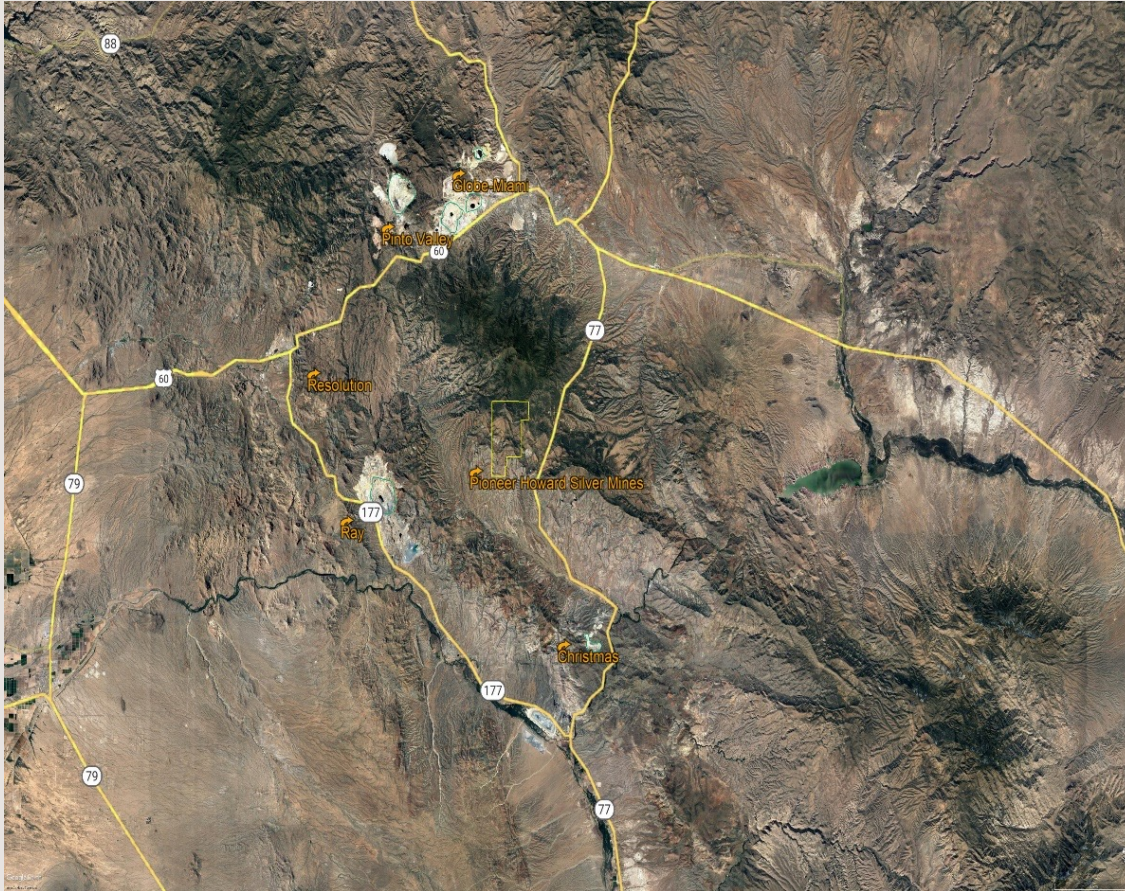


Neihart – Future Drill Program



Pioneer

GILA COUNTY, AZ



- Historic high-grade silver which last produced in the 1870s from an underground shaft mine.
- Production estimate was 250,000 tons of 25 opt Ag with base metal credits of copper, lead and zinc.
- Land package is being consolidated through claims staking, state lease acquisition, and negotiating leases with existing claim owners.
- Geophysics IP during the Spring 2022 to trace downward plunge of mineralized zones. Crews will be mapping and sampling at the site Fall 2022.
- Drilling Planned Fall 2023:
 - Two to three RC drill holes on the extensions of the historic vein systems; and,
 - Drill targeting of the disseminated sulfides which are noted to occur in the underlying monzonite indicating the possibility of a large low-grade porphyry copper deposit.
 - This is large copper porphyry territory (see photo).

2023 PROJECT BUDGET: \$250,000

**Evidence of past production and results does not imply future success. Timing and amount of actual production is dependent on obtaining permits, financing and other factors. Therefore, actual results may vary from projections. Past profitability may not be indicative of future financial results. Actual results may vary from the historical results.*



Market Capitalization

- Gold Express Mines, Inc. is a Nevada Corporation.
- As of May 2023:

Common Shares Issued and Outstanding	61.1 MM
Warrants Issued and Outstanding	37.8 MM
Fully Diluted	99.4 MM
Market Capitalization*	\$24.8 MM
Cash on Hand	\$1.4 MM



GOLD EXPRESS MINES
www.goldexpressmines.com

**Market capitalization is based upon a Black-Scholes model of the value of a unit offering and applying that calculation to the pre-existing common shares outstanding.*



Corporate Team

Executives & Directors

John P. Ryan
President/CEO & Secretary
email: jr@goldexpressmines.com

Howard M. Crosby
Executive Vice-President & Treasurer
email: corkinvest19@gmail.com

James Czirr
Director

Terrence Dunne
Director

Donna Miller
CFO

Helen Thomas
Vice President of Geology & Permitting

Technical & Advisory Personnel

Greg Schiffrin & Minex Personnel (General Exploration)

John Reynolds & Durango Geophysics Personnel
(Geophysics & Project Generation)

James G. Baughman (Geology & GIS)

Manuel Montoya (Project Generation & GIS)

Kurt Hoffman (Land & Leasing)

Robin McCullough (Mine Engineering & Permitting)

Rob Kell (Consulting Geologist & Porphyry Specialist)

Robert Wetzel (Consulting Geologist – California)

Bob Larson (Consulting Geologist – Uravan)

